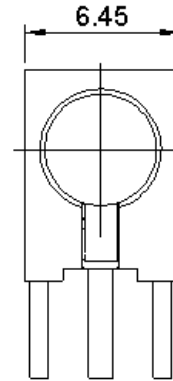
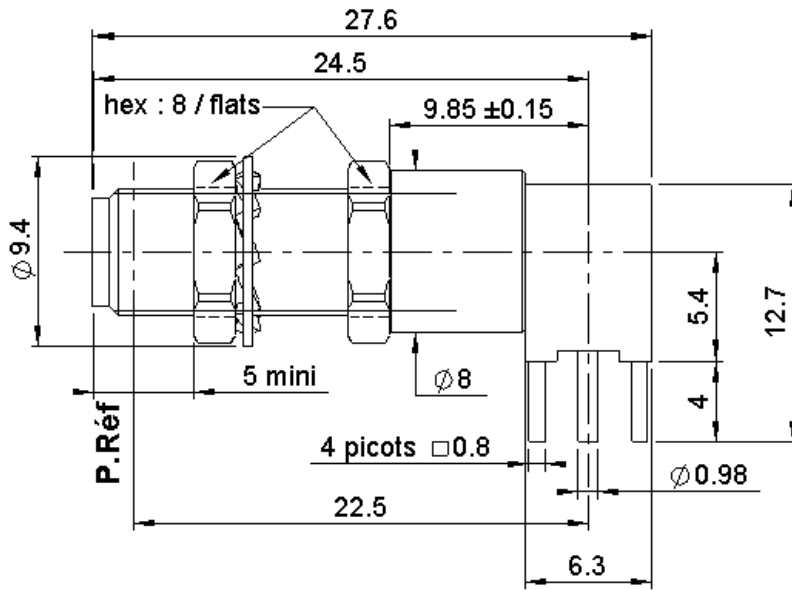


PCB FEMALE RIGHT ANGLE RECEPTACLE 2 SCREWS

R124.667.143

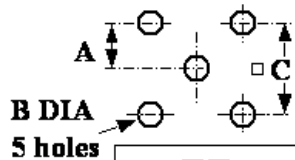
REAR MOUNTING - PACK 60

Series : SMA-COM

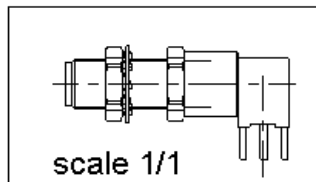


PACKAGING
SEE SCALE: 0,2

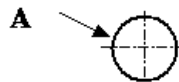
PANEL CUT OUT



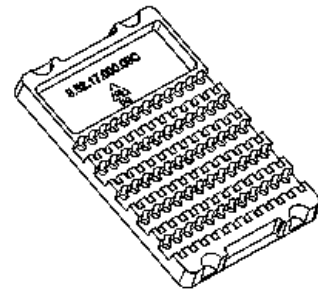
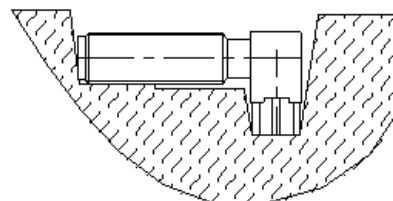
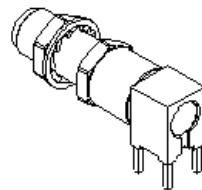
	mm	
	Maxi	mini
A	2.59	2.49
B	1.4	1.3
C	5.13	5.03



PANEL CUT OUT



	mm	
	Maxi	mini
A	6.40	6.35



All dimensions are in mm.

COMPONENTS	MATERIALS	PLATING (µm)
BODY	BRASS	.GOLD 0.2 OVER NICKEL 2
CENTER CONTACT	BERYLLIUM COPPER	.GOLD 1.3 OVER NICKEL 2
OUTER CONTACT	-	-
INSULATOR	PTFE	-
GASKET	-	-
OTHERS PARTS	BRASS	.GOLD 0.2 OVER NICKEL 2
-	-	-
-	-	-

Issue : 0747 C

In the effort to improve our products, we reserve the right to make changes judged to be necessary.



PCB FEMALE RIGHT ANGLE RECEPTACLE 2 SCREWS

R124.667.143

REAR MOUNTING - PACK 60

Series : SMA-COM

PACKAGING

SPECIFICATION

Standard	Unit	Other
60	'W' option	Contact us

ELECTRICAL CHARACTERISTICS

Impedance		50 Ω
Frequency		0-12.4 GHz
VSWR	1.15 +	0,0300 x F(GHz) Maxi
Insertion loss		0.16 √F(GHz) dB Maxi
RF leakage	- (60 - F(GHz)) dB Maxi
Voltage rating		500 Veff Maxi
Dielectric withstanding voltage		1000 Veff mini
Insulation resistance		5000 MΩ mini

ENVIRONMENTAL

Operating temperature	-65/+165 ° C
Hermetic seal	NA Atm.cm3/s
Panel leakage	NA

OTHER CHARACTERISTICS

Assembly instruction **NA**

Others :

Recommended coupling torque: 60Ncm
If 90 Ncm is used: number of operation is limited to 20

MECHANICAL CHARACTERISTICS

Center contact retention		
Axial force – Mating end		27 N mini
Axial force – Opposite end		27 N mini
Torque		NA N.cm mini
Recommended torque		
Mating		NA N.cm
Panel nut		110 N.cm
Mating life		100 Cycles mini
Weight		8,1600 g

Issue : 0747 C

In the effort to improve our products, we reserve the right to make changes judged to be necessary.

